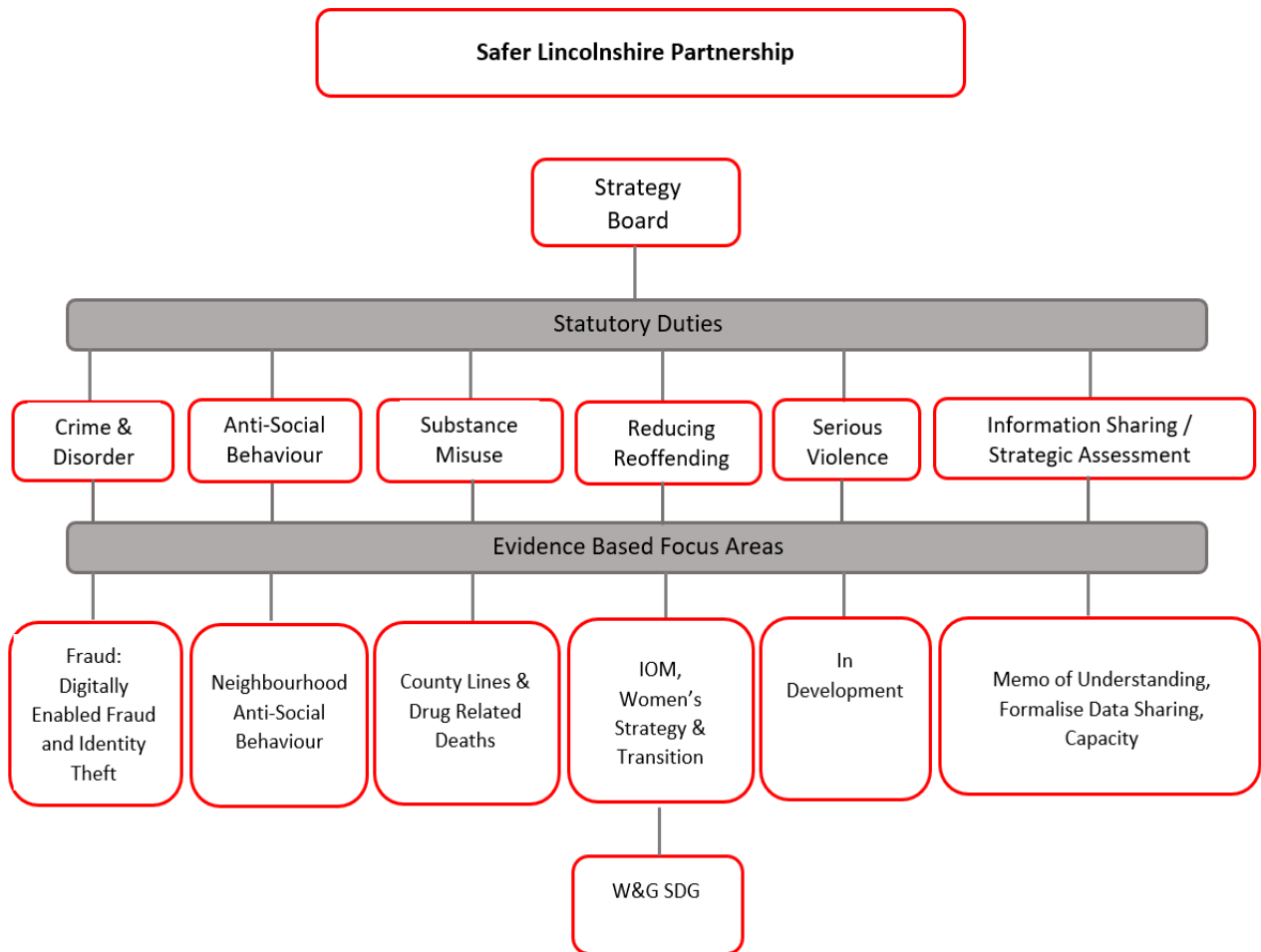




Appendix A SDG Governance

The Women and Girls Strategic Delivery Group (SDG) reports on a quarterly basis to the Reducing Reoffending Core Priority Group (RRO CPG) which falls within the remit of the Safer Lincolnshire Partnership (SLP). The RRO CPG, in turn, reports into the SLP's Strategy Board (SB) on a quarterly basis.



This page is intentionally left blank